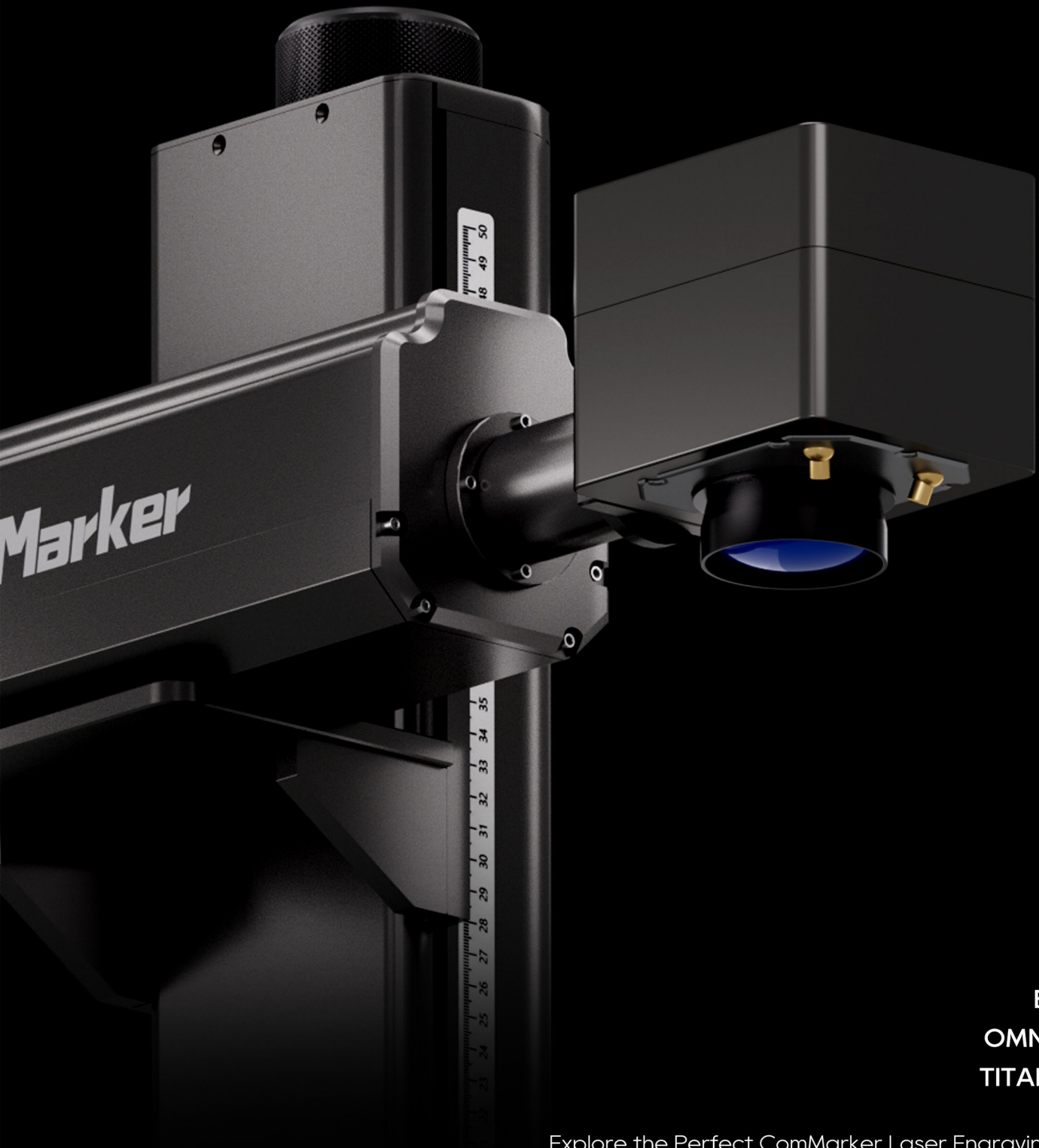


**ComMarker**

# PRODUCT CATALOG

Hello, We are ComMarker.



**B-SERIES  
OMNI-SERIES  
TITAN-SERIES**

Explore the Perfect ComMarker Laser Engraving Machine.  
For infinite creativity. Enjoy unbeatable work flow on reliable laser solutions.

# PRODUCT CATALOG

ABOUT COMMARKER	01
APPLICATIONS	02
OUR TECHNOLOGY	03
LASER ENGRAVING MACHINE SERIES	04
B SERIES	05
COMPARATIVE INTRODUCTION	07
OMNI SERIES	09
COMPARATIVE INTRODUCTION	11
TITAN SERIES	13
COMPARATIVE INTRODUCTION	14
ACCESSORIES	15



## MISSION & VISION

Our mission is to drive laser revolution.  
As a technology- driven company, we pioneer  
advancements shaping the future.

Our vision is to lead global innovation, providing laser  
solutions for progress and sustainability, defining the  
future.

**280000+**

Global Users

**150+**

Countries

**100+**

Patented  
Technologies

## PIONEERING LASER TECHNOLOGY

At ComMarker, founded in 2017, we was born out of the  
dream of a group of laser engineers.

We're incredibly proud of our innovations but are still  
going strong.

# APPLICATIONS



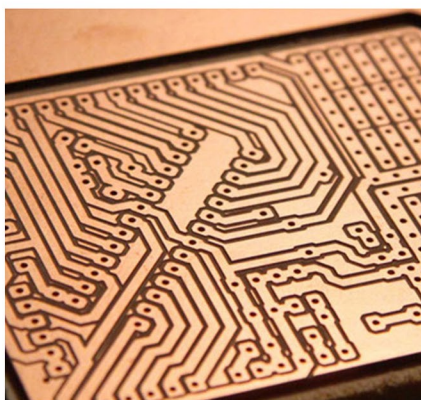
Metal Deep Engraving  
& Cutting



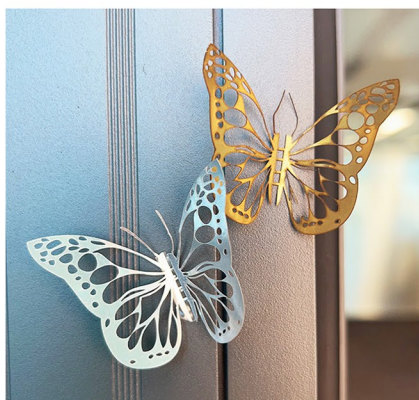
Glass Engraving



Woodworking



Geek Projects



DIY Enthusiasts



Custom Jewelry Making



In-store Customization



Customized Branding

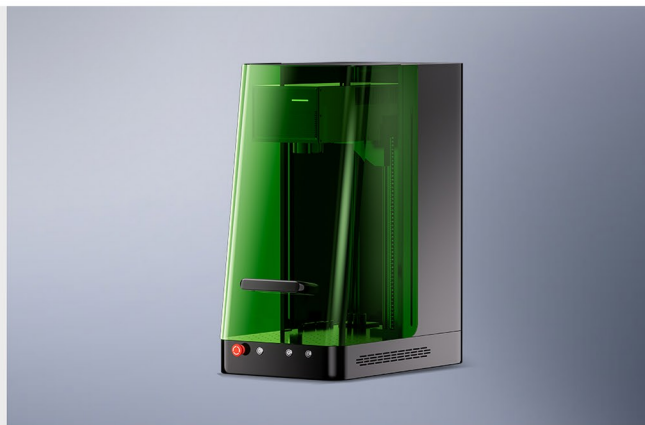


Small Business

# OUR INNOVATION

## OMNI X

Flagship UV Laser Unrivaled Performance. Omni X can unlock 3D Internal Engraving, and empower 1500+ Materials. As the world's safest UV laser engraving system, it also sets Class-1 Safety standard. And now, you can control your laser like never before with ComMarker Center-our platform software for Mobile phone, Windows and Mac. ComMarker Omni X: Smartest. Safest. Beyond X.



## OMNI 1

UV laser, Next Generation Laser to Unlock All Materials. With ZeroBurn™ Engraving Technology, and World's 1st 16K HD Laser Engraver, Accuracy up to 0.0019mm, also, 10,000mm/s SpeedMax™ Engraving System. Innovation in Laser Engraving, start a new era.



## TITAN 1

Designed for Heavy Duty, Stronger Than Ever. Up to 200w Superpower, built to boost your efficiency like never before. Exceptional toughness ensures a mind-blowing lifespan of 100,000 hours. Get ready to deliver game-changing results. Titan all out!



## B6 SERIES

Record-Breaking Compact Size & 2-in-1 Design, with it, you can Laser Anywhere. ComMarker B6 MOPA stands out with its ColorMarking Ability and Super 3D Engraving & Cutting, making it perfect for deep metal engraving and marking. Smaller, more powerful, and smarter.



# LASER ENGRAVING MACHINE



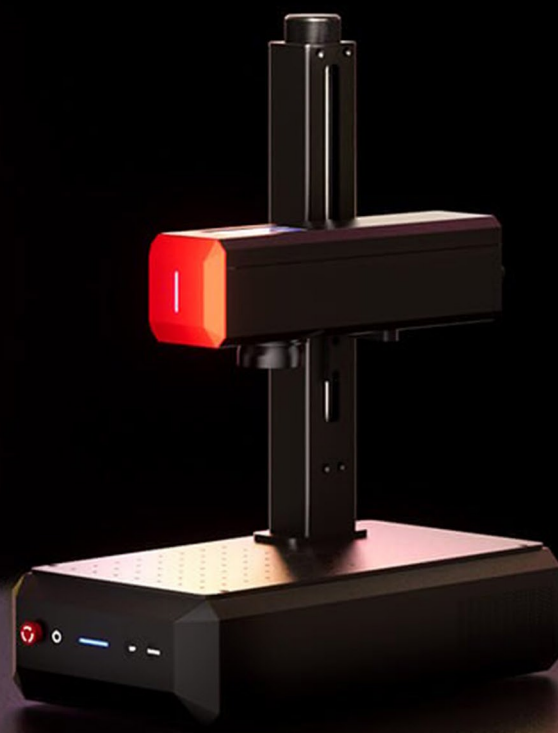
B-SERIES  
OMNI-SERIES  
TITAN-SERIES

## B – SERIES

Auto-Focus  is here

# B6MOPA

Era of Smart Color Engraving





B6



B6 MOPA



B4/B4 MOPA

## B – SERIES COMPARISON

### B4



3D Embossing  
Deep Engraving



Accurate  
0.01mm



Engraving Speed  
0-15,000mm/s



2-3mm  
Depth on metal



Electric lifting



100,000 Hrs  
Service life



LightBurn and  
EZCAD2



Laser power  
20w/30w/50w/100w

### B4 MOPA



Color  
Marking Ability



3D Embossing  
Deep Engraving



Accurate  
0.01mm



Engraving Speed  
0-15,000mm/s



2-3mm  
Depth on metal



Electric lifting



100,000 Hrs  
Service life



LightBurn and  
EZCAD2



Laser power  
20w/30w/60w/100w

## B – SERIES COMPARISON

### B6



Smart  
LED Touch Screen



3D Embossing  
Deep Engraving



World 's Smallest  
Fiber Laser Engraver



Accurate  
0.01mm



8K  
HD Accuracy



Engraving Speed  
0-15,000mm/s



Auto-Focus  
Technology



Laser Power  
20w/30w



100,000 Hrs  
Service life

### B6 MOPA



Smart  
LED Touch Screen



Color  
Marking Ability



3D Embossing  
Deep Engraving



World 's Smallest  
Fiber Laser Engraver



Accurate  
0.01mm



8K  
HD Accuracy



Engraving Speed  
0-15,000mm/s



Auto-Focus  
Technology



Laser Power  
20w/30w/60w



100,000 Hrs  
Service life

OMNI – SERIES

16K HD & ZeroBurn™ Engraving

# OMNI SERIES

Next Generation Laser to Unlock All Materials.



Flagship UV Laser  
**OMNI X**  
Smartest. Safest. Beyond X.



OMNI X

16K HD & ZeroBurn™ Engraving  
**OMNI 1**  
Next Generation Laser to Unlock All Materials.



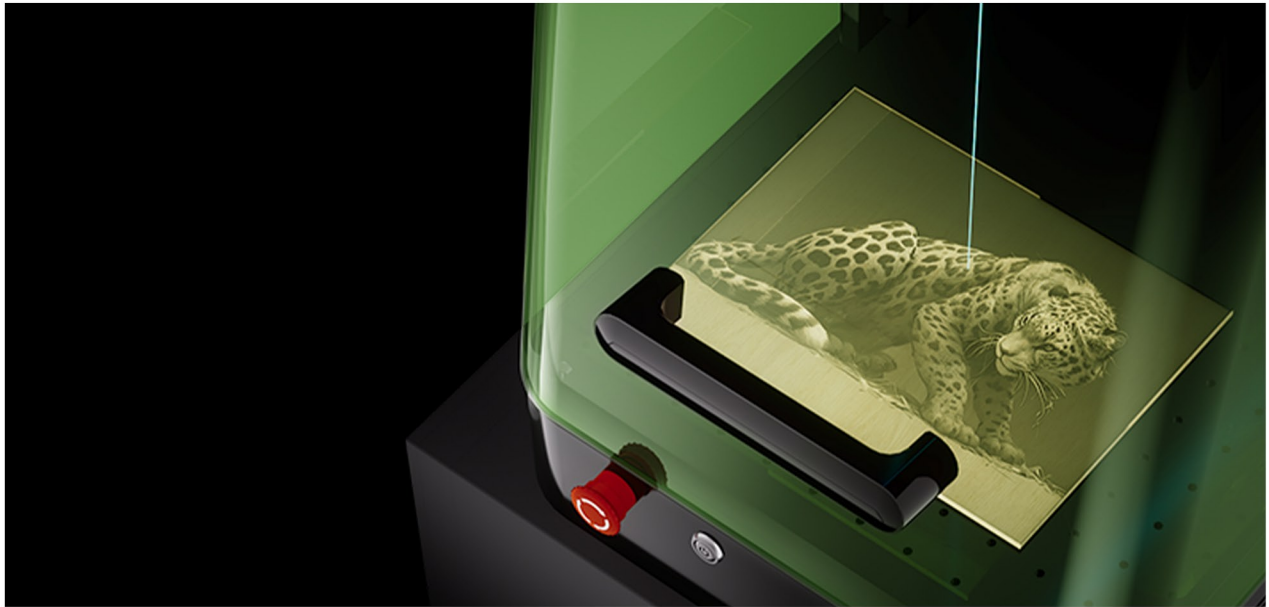
OMNI 1 15W

**Oh hi, 10W.**  
Meet the new member of Omni 1.



OMNI 1 10W

# OMNI X – SPECIFICATIONS



Flagship **UV** Laser



Next Gen Laser to Unlock **1500+** Materials



**3D** Internal Engraving



**ZeroBurn™** Engraving Technology



0.0019mm Accuracy **16K HD** Engraving



**Class-1** Laser Safety



Engraving Speed **0-10,000**mm/s



**LiDAR** Ranging System



Expanded Working Area By **266%\***



**Gen-X** Technology

# OMNI 1 – SERIES COMPARISON

## OMNI 1 5W



ColdFront™  
Air cooling Technology



ZeroBurn™  
Engraving Technology



World's 1st 16K HD  
Laser Engraver



Unlock all material  
with UV Laser



Electric Lifting with  
2 Optional Lenses



360° Rotary  
Engraving System



Engraving Speed  
0-10,000mm/s



0.0019mm  
Accuracy



Machine Size  
350\*640\*700mm



10,000 Hrs  
Service life



5w

## OMNI 1 10W



ColdFront™ Pro  
Water cooling Technology



ZeroBurn™  
Engraving Technology



World's 1st 16K HD  
Laser Engraver



Unlock all material  
with UV Laser



Electric Lifting with  
2 Optional Lenses



360° Rotary  
Engraving System



Engraving Speed  
0-10,000mm/s



0.0019mm  
Accuracy



Machine Size : 320\*520\*720mm  
Water Chiller : 410\*313\*273mm



10,000 Hrs  
Service life



10w

## TITAN – SERIES

Designed for Heavy Duty 

# TITAN 1

Stronger than ever.



# TITAN – SPECIFICATIONS



Designed for Heavy Duty



Up to 200W Superpower



Color Marking Ability



Electric Lifting with 2 Optional Lenses



3D Embossing Deep Engraving



Engraving Speed 0-15,000mm/s



0.01mm Accuracy 8K HD Engraving



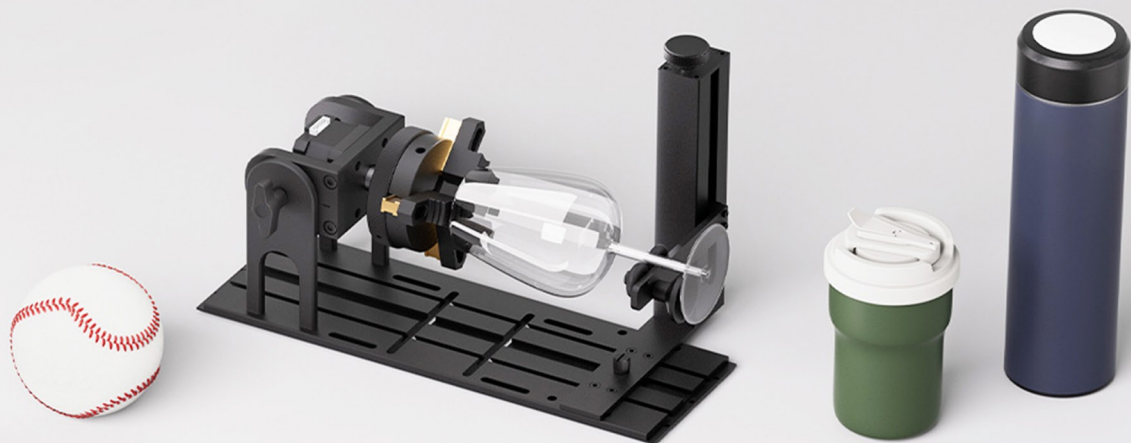
LightBurn and EZCAD2



60w/100w/ 200w

# Laser Engraver Accessories

Explore our wide variety of laser engraver accessories, from the laser engraver safety enclosure protective cover and fume extractor to the protection sheet organic glass and R5 rotary axis.



# ACCESSORIES



**Slide Extension**



**R5 Multi-Functional Rotary**



**Safety Enclosure Pro**



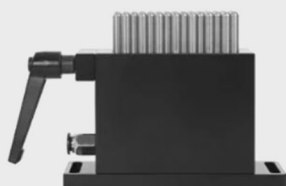
**Safety Shield**



**Fume Extractor-100W**



**Fume Extractor-30W**



**Flexible Fixture**



**Metal Sheet Holder**



**D69 Rotary**

# ACCESSORIES



**D80 Rotary**



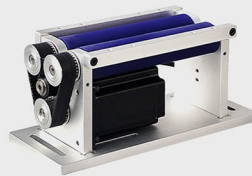
**D80 Rotary Deluxe Kit**



**D50 Ring Rotary**



**Laser Fiber Lift Table For  
Marking Machine**



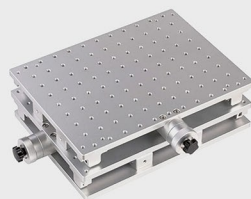
**Engraving Rotary Roller**



**Field Lens for Laser Machine**



**Safety Goggles for  
B/M7 Series**



**2D/XY Workbench**



**Filter Replacement of  
30W Fume Extractor**

ComMarker industrial Co., limited



General inquiries:  
[Hello@commarker.com](mailto:Hello@commarker.com)

Technical support:  
[support@commarker.com](mailto:support@commarker.com)